



# COVID-19 SITUATION REPORT

## BI-WEEKLY EPIDEMIOLOGICAL REPORT 13

Epi Week 41 – 42: 10<sup>th</sup> – 23<sup>rd</sup> October 2022

DATA AS REPORTED AND ACCURATE BY NCDC AS OF MIDNIGHT 23<sup>RD</sup> OCTOBER 2022

The information contained in this document is confidential, privileged and only for the intended recipient and may not be used, published, or redistributed to the public

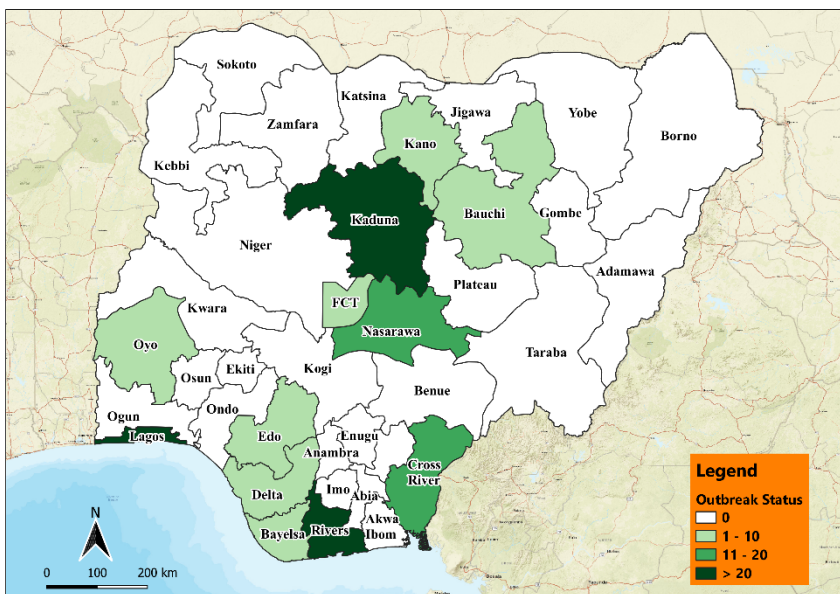


Fig 1. Distribution of cases (Epi Weeks 41 & 42, 2022 only)

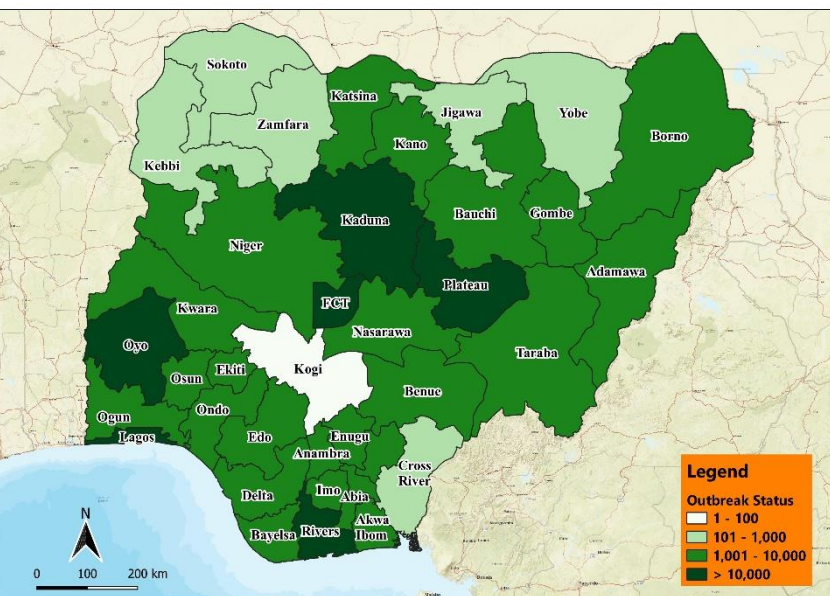


Fig 2. Distribution of cumulative cases as of Epi Week 42, 2022

### HIGHLIGHTS

- In weeks 41 & 42, the number of samples tested decreased to **15,672** from **18,805** reported in weeks 39 & 40. These were reported in **33** states and FCT (Table 1).
- In weeks 41 & 42, the number of confirmed cases decreased to **190 (1.2%)** from **546 (2.9%)** reported in weeks 39 & 40. These were reported in **11** states and FCT (Tables 1 & 2) based on **RDT & PCR testing**.
- In weeks 41 & 42, discharged cases decreased to **150** from **872** in weeks 39 & 40.
- There was **no** death reported in the last two weeks (Tables 1 & 4).
- Cumulatively, since the outbreak began on Week 9, 2020, **265,841** cases and **3,155** deaths have been reported giving a case fatality rate (CFR) of **1.2%** (Tables 1 & 4).
- In weeks 41 & 42, the number of inbound international travellers tested was **1,269** of which **19 (1.5%)** were positive compared to **21 (1.7%)** (out of 1,213 tested) in weeks 39 & 40.
- In weeks 41 & 42, the number of outbound international travellers tested was **1,534** of which **23 (1.5%)** were positive compared to **46 (2.2%)** (out of 2,128 tested) in weeks 39 & 40.
- Worldwide, there have been **625,740,449** confirmed COVID-19 cases with **6,563,667** deaths giving a case fatality rate of **1.0%**.

**\*The inbound and outbound testing for weeks 39 & 40 has been updated to include additional samples.**

## GENERAL FACT SHEET – DATA AT 23<sup>RD</sup> OCTOBER 2022

Table 1: States with reported laboratory-confirmed COVID-19 cases, recoveries, deaths, samples tested and active cases.

STATE	CONFIRMED		RECOVERIES		DEATHS		ACTIVE CASES	TESTING	
	Total	Last 2 Weeks	Total	Last 2 Weeks	Total	Last 2 Weeks		Total	Last 2 Weeks
Abia	2,258	0	2,209	0	34	0	15	130,766	158
Adamawa	1,309	0	1,140	0	38	0	131	44,343	514
Akwa Ibom	4,976	0	4,891	0	44	0	41	132,319	992
Anambra	2,825	0	2,760	0	19	0	46	65,980	31
Bauchi	2,020	5	1,990	24	24	0	6	44,448	62
Bayelsa	1,365	1	1,345	0	28	0	-8	46,089	75
Benue	2,311	0	2,204	0	25	0	82	64,278	1
Borno	1,629	0	1,580	0	44	0	5	32,702	77
Cross River	932	12	903	2	25	0	4	34,158	1
Delta	5,777	9	5,170	0	112	0	495	148,163	2102
Ebonyi	2,064	0	2,004	0	32	0	28	43,777	4
Edo	7,927	4	7,641	0	322	0	-36	184,478	176
Ekiti	2,449	0	2,398	2	28	0	23	140,405	182
Enugu	2,952	0	2,910	0	29	0	13	86,242	46
FCT	29,390	2	29,067	1	249	0	74	737,375	2576
Gombe	3,313	0	3,239	0	66	0	8	124,734	175
Imo	2,691	0	2,590	0	58	0	43	97,947	9
Jigawa	669	0	649	0	18	0	2	36,083	92
Kaduna	11,600	22	11,492	29	90	0	18	242,436	649
Kano	5,339	5	5,093	24	126	0	120	176,863	81
Katsina	2,418	0	2,381	0	37	0	0	75,783	4
Kebbi	480	0	454	0	16	0	10	90,369	0
Kogi	5	0	3	0	2	0	0	19,163	1
Kwara	4,691	0	4,175	0	64	0	452	109,838	6
Lagos	104,134	83	101,977	0	771	0	1,386	1,374,563	2527
Nasarawa	2,796	15	2,345	0	39	0	412	50,065	346
Niger	1,183	0	998	0	20	0	165	38,331	5
Ogun	5,810	0	5,717	0	82	0	11	149,807	1602
Ondo	5,173	0	4,749	0	109	0	315	112,856	88
Osun	3,311	0	3,183	0	92	0	36	67,072	1889

STATE	CONFIRMED		RECOVERIES		DEATHS		ACTIVE CASES	TESTING	
	Total	Last 2 Weeks	Total	Last 2 Weeks	Total	Last 2 Weeks		Total	Last 2 Weeks
Oyo	10,331	2	10,122	3	202	0	7	135,902	107
Plateau	10,326	0	10,223	0	75	0	28	108,917	8
Rivers	18,074	30	17,852	65	155	0	67	507,072	786
Sokoto	822	0	794	0	28	0	0	96,088	298
Taraba	1,478	0	1,377	0	34	0	67	35,868	2
Yobe	638	0	625	0	9	0	4	37,575	0
Zamfara	375	0	366	0	9	0	0	19,177	0
Total	265,841	190	258,616	150	3,155	0	4,070	5,642,032	15,672

### Test type disaggregation (last two weeks)

Type	Number of tests done	Percentage of tests done
PCR	5,289	33.7%
RDT	10,383	66.3%
<b>TOTAL</b>	<b>15,672</b>	

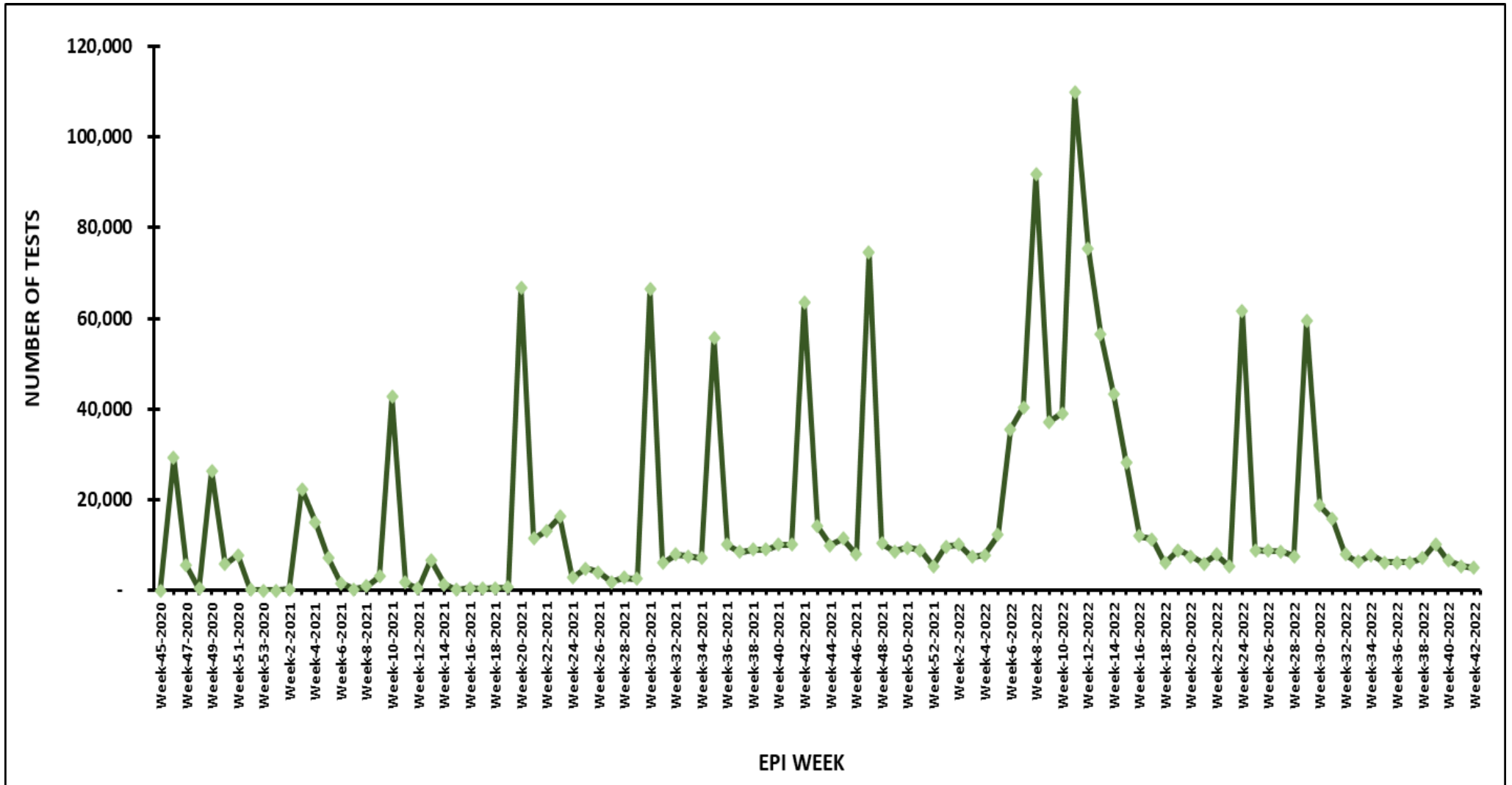
Test type disaggregation (cumulative)		
Type	Number of tests done	Percentage of tests done
PCR	3,969,079	70.3%
RDT	1,673,581	29.7%
<b>TOTAL</b>	<b>5,642,660</b>	

## PASSENGERS TESTS: Laboratories and COVID-19 tests for Returning and Outbound Persons of Interest

LABORATORY	INBOUND
AFRIGLOBAL	178
Everight Diagnostic & Laboratory Services Ltd	140
DNA DIAGNOSTIC LABORATORY	110
MEDBURY	97
BIOSENSORS MEDICAL DIAGNOSTICS	94
BLUE COAT	72
Medicaid Radio Diagnostics	61
54GENE	54
CEDARCREST HOSPITALS MOLECULAR LABORATORY	36
DEXMIAN MOLECULAR LABORATORY AND DIAGNOSTICS SERVICES	34
CLINA-LANCET	34
ARRIVE ALIVE	30
REDDINGTON ZAINE LAB	29
CAPITOL HILL MOLECULAR LABORATORY	27
GENEQUEST	25
EHA CLINICS LIMITED	21
DDW Molecular Laboratories	20
SYNLAB	18
CLINIX HEALTHCARE	18
UNION DIAGNOSTICS	17
ARAB INTERNATIONAL LABORATORY	15
LIFECENTER	14
VCARE	13
IBOM MOLECULAR LABORATORY	13
BIOLOGIX	13
LIFEBRIDGE MEDICAL DIAGNOSTIC CENTER LTD	11
EDO SPECIALIST HOSPITAL	9
MEDI-COM HEALTHCARE	9
Zankli Medical Centre	8
WESTEND HOSPITAL MOLECULAR LABORATORY	8
SAHEL LABS	7
ME CURE	6
LILY HOSPITAL LIMITED	6
TOBIS MOLECULAR DIAGNOSTICS LABORATORY	4
COOLSPRING	3
LANDMARK MEDICAL DIAGNOSTICS	3
LASUCOM	3
PAELON	2
ABUAD Multi-System Hospital	2
NIZAMIYE MOLECULAR LABORATORY	2
LABCREST LABORATORIES	1
CENTOLAB	1
EL-LAB MOLECULAR LAB	1
<b>Grand Total</b>	<b>1,269</b>

LABORATORY	OUTBOUND
MEDBURY	254
LIFE CENTER	141
DNA labs Abuja	135
CLINIX HEALTHCARE	130
Cedarcrest Hospitals Abuja	97
ARRIVE ALIVE	95
ZAINE LAB	58
MEDBURY MEDICAL SERVICES	40
EVERCARE	39
E-clinic & Diagnostics	38
EHA Clinics	33
Dexmian medical laboratory	31
DNA LABS KADUNA	31
Everight diagnostics (Abuja)	31
LILY LAB	30
Genequest	30
BIOLOGIX	27
Arab Labs	23
CLINA-LANCET LABORATORIES ABUJA	23
54Gene Lagos	20
ACCOUNS	20
EL-LAB MOLECULAR LAB	19
Edo Specialist Hospital	18
SYNLAB	18
IML	16
UNION DIAGNOSTICS	16
The GeneLab	14
FUNBELL	12
LANDMARK DIAGNOSTICS	10
NIZAMIYE	9
BIOSENSORS MEDICAL DIAGNOSTICS	8
DNA LAB	7
ME CURE	7
WESTEND HOSPITAL MOLECULAR LABORATORY	6
CAPITOL HILL MOLECULAR LAB	5
THE LOVETT LAWSON MOLECULAR LAB	5
TOTAL LAB	5
VCARE	5
HARLEY AND RAINBOW	4
DDW	3
BLUE COAT	3
INVESTPATH	3
ACCUNALYSIS	2
UNION DIAGNOSTICS IBADAN	2
CoolSpring	2
LASUCOM	2
CENTOLAB	1
IBOM MOLECULAR LABORATORY	1
sahel molecular laboratory ABUJA	1
BLUECORAL	1
MEDILAG	1
PAELON	1
The Specialist Lab	1
<b>Grand Total</b>	<b>1,534</b>

## WEEKLY RDT TREND



**Figure 3:** Weekly RDT trend as of 23<sup>rd</sup> October 2022

## CUMULATIVE RDT TREND BY WEEK

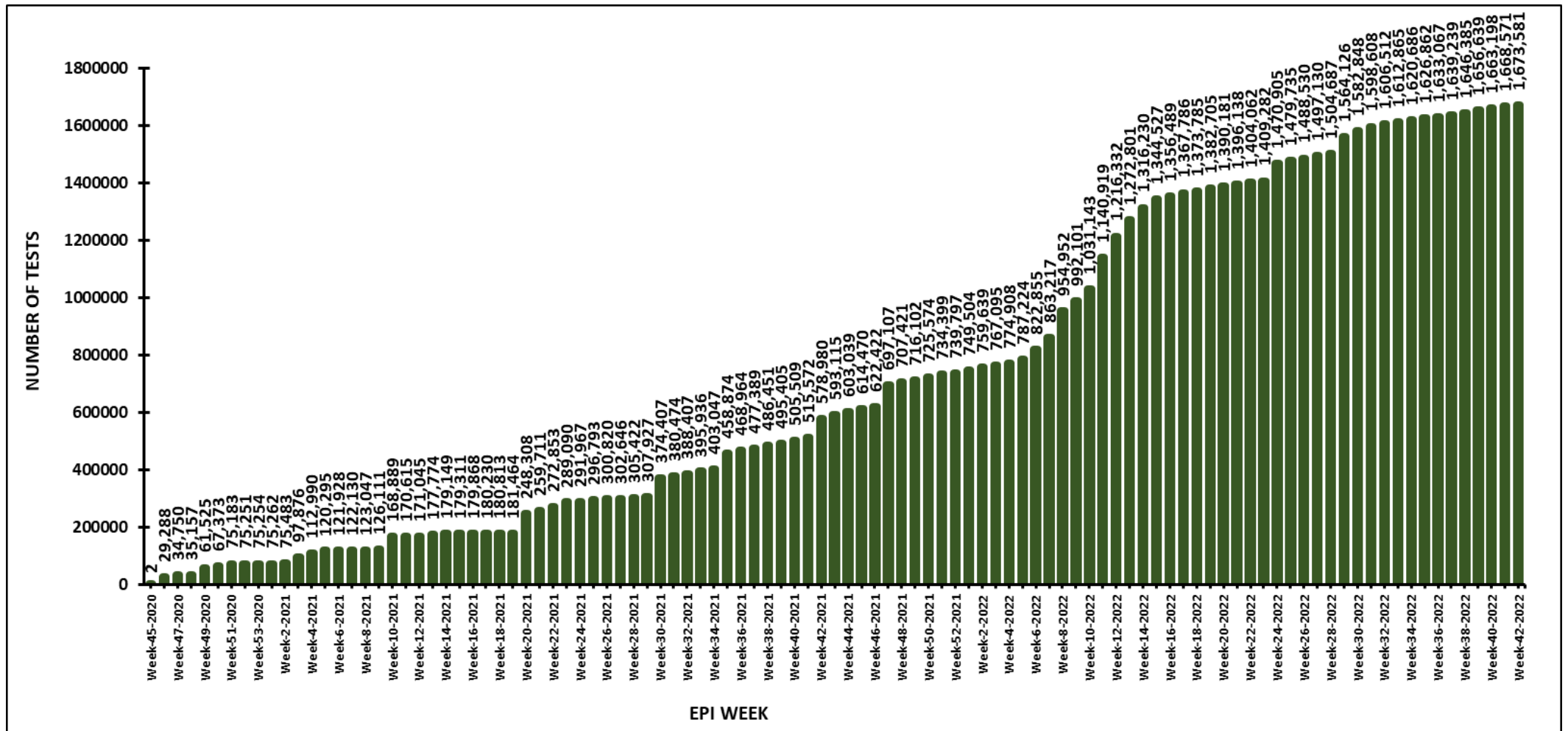


Figure 4: Cumulative RDT weekly trend as of 23<sup>rd</sup> October 2022



## DAILY CONFIRMED CASES – DATA AS AT 23<sup>RD</sup> OCTOBER 2022

Table 2: States with reported laboratory-confirmed COVID-19 cases daily over the last two weeks

CONFIRMED CASES	WEEK 41 - 42	10 <sup>th</sup> Oct	11 <sup>th</sup> Oct	12 <sup>th</sup> Oct	13 <sup>th</sup> Oct	14 <sup>th</sup> Oct	15 <sup>th</sup> Oct	16 <sup>th</sup> Oct	17 <sup>th</sup> Oct	18 <sup>th</sup> Oct	19 <sup>th</sup> Oct	20 <sup>th</sup> Oct	21 <sup>st</sup> Oct	22 <sup>nd</sup> Oct	23 <sup>rd</sup> Oct
	TOTAL	Monday	Tuesday	Wednesday	Thursday	Friday	Saturday	Sunday	Monday	Tuesday	Wednesday	Thursday	Friday	Saturday	Sunday
Abia	0	0	0	0	0	0	0	0	0	0	0	0	0	0	0
Adamawa	0	0	0	0	0	0	0	0	0	0	0	0	0	0	0
Akwa Ibom	0	0	0	0	0	0	0	0	0	0	0	0	0	0	0
Anambra	0	0	0	0	0	0	0	0	0	0	0	0	0	0	0
Bauchi	5	0	1	1	1	0	0	0	2	0	0	0	0	0	0
Bayelsa	1	0	0	0	0	0	0	0	0	0	0	1	0	0	0
Benue	0	0	0	0	0	0	0	0	0	0	0	0	0	0	0
Borno	0	0	0	0	0	0	0	0	0	0	0	0	0	0	0
Cross River	12	0	0	0	0	0	0	0	12	0	0	0	0	0	0
Delta	9	0	5	1	1	0	0	0	0	0	0	0	2	0	0
Ebonyi	0	0	0	0	0	0	0	0	0	0	0	0	0	0	0
Edo	4	0	0	0	0	0	0	2	0	0	0	0	0	0	2
Ekiti	0	0	0	0	0	0	0	0	0	0	0	0	0	0	0
Enugu	0	0	0	0	0	0	0	0	0	0	0	0	0	0	0
FCT	2	0	0	0	0	0	0	1	0	0	0	0	0	0	1
Gombe	0	0	0	0	0	0	0	0	0	0	0	0	0	0	0
Imo	0	0	0	0	0	0	0	0	0	0	0	0	0	0	0
Jigawa	0	0	0	0	0	0	0	0	0	0	0	0	0	0	0
Kaduna	22	7	3	5	2	0	0	0	0	0	0	5	0	0	0
Kano	5	0	0	0	3	0	1	0	1	0	0	0	0	0	0
Katsina	0	0	0	0	0	0	0	0	0	0	0	0	0	0	0
Kebbi	0	0	0	0	0	0	0	0	0	0	0	0	0	0	0
Kogi	0	0	0	0	0	0	0	0	0	0	0	0	0	0	0

CONFIRMED CASES	WEEK 41 - 42	10 <sup>th</sup> Oct	11 <sup>th</sup> Oct	12 <sup>th</sup> Oct	13 <sup>th</sup> Oct	14 <sup>th</sup> Oct	15 <sup>th</sup> Oct	16 <sup>th</sup> Oct	17 <sup>th</sup> Oct	18 <sup>th</sup> Oct	19 <sup>th</sup> Oct	20 <sup>th</sup> Oct	21 <sup>st</sup> Oct	22 <sup>nd</sup> Oct	23 <sup>rd</sup> Oct
	TOTAL	Monday	Tuesday	Wednesday	Thursday	Friday	Saturday	Sunday	Monday	Tuesday	Wednesday	Thursday	Friday	Saturday	Sunday
<b>Kwara</b>	<b>0</b>	0	0	0	0	0	0	0	0	0	0	0	0	0	0
<b>Lagos</b>	<b>83</b>	5	14	10	6	1	6	1	6	11	2	5	7	6	3
<b>Nasarawa</b>	<b>15</b>	1	0	5	1	0	0	0	1	3	3	0	1	0	0
<b>Niger</b>	<b>0</b>	0	0	0	0	0	0	0	0	0	0	0	0	0	0
<b>Ogun</b>	<b>0</b>	0	0	0	0	0	0	0	0	0	0	0	0	0	0
<b>Ondo</b>	<b>0</b>	0	0	0	0	0	0	0	0	0	0	0	0	0	0
<b>Osun</b>	<b>0</b>	0	0	0	0	0	0	0	0	0	0	0	0	0	0
<b>Oyo</b>	<b>2</b>	2	0	0	0	0	0	0	0	0	0	0	0	0	0
<b>Plateau</b>	<b>0</b>	0	0	0	0	0	0	0	0	0	0	0	0	0	0
<b>Rivers</b>	<b>30</b>	0	2	0	2	0	5	0	12	1	8	0	0	0	0
<b>Sokoto</b>	<b>0</b>	0	0	0	0	0	0	0	0	0	0	0	0	0	0
<b>Taraba</b>	<b>0</b>	0	0	0	0	0	0	0	0	0	0	0	0	0	0
<b>Yobe</b>	<b>0</b>	0	0	0	0	0	0	0	0	0	0	0	0	0	0
<b>Zamfara</b>	<b>0</b>	0	0	0	0	0	0	0	0	0	0	0	0	0	0
<b>Total</b>	<b>190</b>	<b>15</b>	<b>25</b>	<b>22</b>	<b>16</b>	<b>1</b>	<b>12</b>	<b>4</b>	<b>34</b>	<b>15</b>	<b>13</b>	<b>11</b>	<b>10</b>	<b>6</b>	<b>6</b>



## DAILY RECOVERIES – DATA AS AT 23<sup>RD</sup> OCTOBER 2022

Table 3: States with reported case management confirmed COVID-19 recoveries daily over the last two weeks.

RECOVERIES	WEEK 41 - 42	10 <sup>th</sup> Oct	11 <sup>th</sup> Oct	12 <sup>th</sup> Oct	13 <sup>th</sup> Oct	14 <sup>th</sup> Oct	15 <sup>th</sup> Oct	16 <sup>th</sup> Oct	17 <sup>th</sup> Oct	18 <sup>th</sup> Oct	19 <sup>th</sup> Oct	20 <sup>th</sup> Oct	21 <sup>st</sup> Oct	22 <sup>nd</sup> Oct	23 <sup>rd</sup> Oct
	TOTAL	Monday	Tuesday	Wednesday	Thursday	Friday	Saturday	Sunday	Monday	Tuesday	Wednesday	Thursday	Friday	Saturday	Sunday
Abia	0	0	0	0	0	0	0	0	0	0	0	0	0	0	0
Adamawa	0	0	0	0	0	0	0	0	0	0	0	0	0	0	0
Akwa Ibom	0	0	0	0	0	0	0	0	0	0	0	0	0	0	0
Anambra	0	0	0	0	0	0	0	0	0	0	0	0	0	0	0
Bauchi	24	14	0	0	0	0	0	14	10	0	0	0	0	0	0
Bayelsa	0	0	0	0	0	0	0	0	0	0	0	0	0	0	0
Benue	0	0	0	0	0	0	0	0	0	0	0	0	0	0	0
Borno	0	0	0	0	0	0	0	0	0	0	0	0	0	0	0
Cross River	2	0	0	0	0	0	0	0	2	0	0	0	0	0	0
Delta	0	0	0	0	0	0	0	0	0	0	0	0	0	0	0
Ebonyi	0	0	0	0	0	0	0	0	0	0	0	0	0	0	0
Edo	0	0	0	0	0	0	0	0	0	0	0	0	0	0	0
Ekiti	2	0	0	0	2	0	0	0	0	0	0	0	0	0	0
Enugu	0	0	0	0	0	0	0	0	0	0	0	0	0	0	0
FCT	1	0	0	0	0	0	0	0	0	0	0	0	0	0	1
Gombe	0	0	0	0	0	0	0	0	0	0	0	0	0	0	0
Imo	0	0	0	0	0	0	0	0	0	0	0	0	0	0	0
Jigawa	0	0	0	0	0	0	0	0	0	0	0	0	0	0	0
Kaduna	29	16	0	0	0	0	4	16	0	0	0	3	0	0	0
Kano	24	0	0	0	0	24	0	0	0	0	0	0	0	0	0
Katsina	0	0	0	0	0	0	0	0	0	0	0	0	0	0	0
Kebbi	0	0	0	0	0	0	0	0	0	0	0	0	0	0	0

RECOVERIES	WEEK 41 - 42	10 <sup>th</sup> Oct	11 <sup>th</sup> Oct	12 <sup>th</sup> Oct	13 <sup>th</sup> Oct	14 <sup>th</sup> Oct	15 <sup>th</sup> Oct	16 <sup>th</sup> Oct	17 <sup>th</sup> Oct	18 <sup>th</sup> Oct	19 <sup>th</sup> Oct	20 <sup>th</sup> Oct	21 <sup>st</sup> Oct	22 <sup>nd</sup> Oct	23 <sup>rd</sup> Oct
	TOTAL	Monday	Tuesday	Wednesday	Thursday	Friday	Saturday	Sunday	Monday	Tuesday	Wednesday	Thursday	Friday	Saturday	Sunday
Kogi	0	0	0	0	0	0	0	0	0	0	0	0	0	0	0
Kwara	0	0	0	0	0	0	0	0	0	0	0	0	0	0	0
Lagos	0	0	0	0	0	0	0	0	0	0	0	0	0	0	0
Nasarawa	0	0	0	0	0	0	0	0	0	0	0	0	0	0	0
Niger	0	0	0	0	0	0	0	0	0	0	0	0	0	0	0
Ogun	0	0	0	0	0	0	0	0	0	0	0	0	0	0	0
Ondo	0	0	0	0	0	0	0	0	0	0	0	0	0	0	0
Osun	0	0	0	0	0	0	0	0	0	0	0	0	0	0	0
Oyo	3	0	0	0	0	0	0	0	0	0	0	0	0	0	0
Plateau	0	0	0	0	0	0	0	0	0	0	0	0	0	0	0
Rivers	65	10	8	3	0	9	1	10	2	2	5	3	1	0	1
Sokoto	0	0	0	0	0	0	0	0	0	0	0	0	0	0	0
Taraba	0	0	0	0	0	0	0	0	0	0	0	0	0	0	0
Yobe	0	0	0	0	0	0	0	0	0	0	0	0	0	0	0
Zamfara	0	0	0	0	0	0	0	0	0	0	0	0	0	0	0
Total	150	40	8	3	2	33	5	40	14	2	5	6	1	0	2

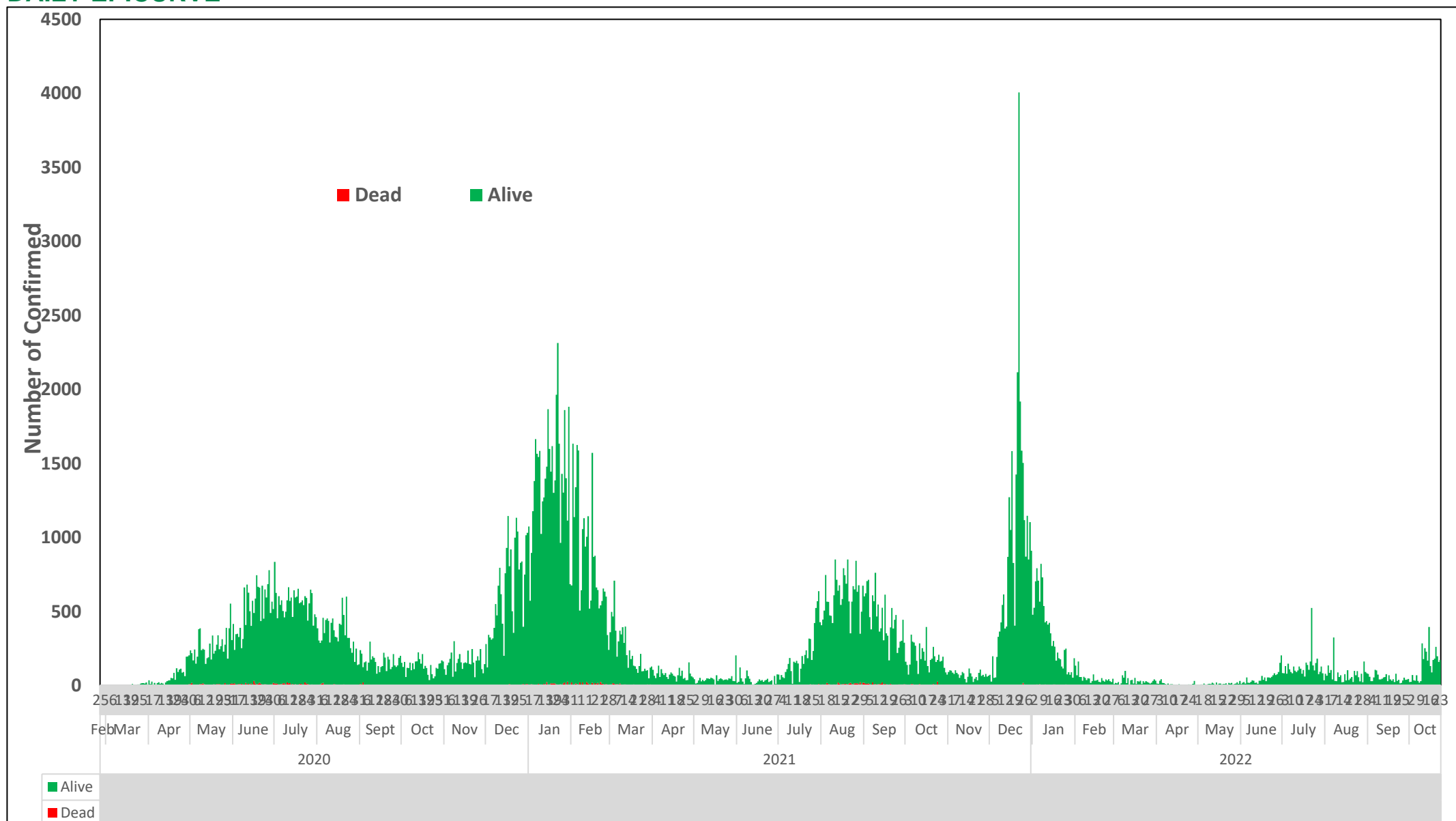
## DAILY FATALITIES – DATA AS AT 23<sup>RD</sup> OCTOBER 2022

Table 4: States with reported COVID-19 fatalities daily over the last two weeks

DEATHS	WEEK 41 - 42	10 <sup>th</sup> Oct	11 <sup>th</sup> Oct	12 <sup>th</sup> Oct	13 <sup>th</sup> Oct	14 <sup>th</sup> Oct	15 <sup>th</sup> Oct	16 <sup>th</sup> Oct	17 <sup>th</sup> Oct	18 <sup>th</sup> Oct	19 <sup>th</sup> Oct	20 <sup>th</sup> Oct	21 <sup>st</sup> Oct	22 <sup>nd</sup> Oct	23 <sup>rd</sup> Oct
	TOTAL	Monday	Tuesday	Wednesday	Thursday	Friday	Saturday	Sunday	Monday	Tuesday	Wednesday	Thursday	Friday	Saturday	Sunday
Abia	0	0	0	0	0	0	0	0	0	0	0	0	0	0	0
Adamawa	0	0	0	0	0	0	0	0	0	0	0	0	0	0	0
Akwa Ibom	0	0	0	0	0	0	0	0	0	0	0	0	0	0	0
Anambra	0	0	0	0	0	0	0	0	0	0	0	0	0	0	0
Bauchi	0	0	0	0	0	0	0	0	0	0	0	0	0	0	0
Bayelsa	0	0	0	0	0	0	0	0	0	0	0	0	0	0	0
Benue	0	0	0	0	0	0	0	0	0	0	0	0	0	0	0
Borno	0	0	0	0	0	0	0	0	0	0	0	0	0	0	0
Cross River	0	0	0	0	0	0	0	0	0	0	0	0	0	0	0
Delta	0	0	0	0	0	0	0	0	0	0	0	0	0	0	0
Ebonyi	0	0	0	0	0	0	0	0	0	0	0	0	0	0	0
Edo	0	0	0	0	0	0	0	0	0	0	0	0	0	0	0
Ekiti	0	0	0	0	0	0	0	0	0	0	0	0	0	0	0
Enugu	0	0	0	0	0	0	0	0	0	0	0	0	0	0	0
FCT	0	0	0	0	0	0	0	0	0	0	0	0	0	0	0
Gombe	0	0	0	0	0	0	0	0	0	0	0	0	0	0	0
Imo	0	0	0	0	0	0	0	0	0	0	0	0	0	0	0
Jigawa	0	0	0	0	0	0	0	0	0	0	0	0	0	0	0
Kaduna	0	0	0	0	0	0	0	0	0	0	0	0	0	0	0
Kano	0	0	0	0	0	0	0	0	0	0	0	0	0	0	0
Katsina	0	0	0	0	0	0	0	0	0	0	0	0	0	0	0
Kebbi	0	0	0	0	0	0	0	0	0	0	0	0	0	0	0

DEATHS	WEEK 41 - 42	10 <sup>th</sup> Oct	11 <sup>th</sup> Oct	12 <sup>th</sup> Oct	13 <sup>th</sup> Oct	14 <sup>th</sup> Oct	15 <sup>th</sup> Oct	16 <sup>th</sup> Oct	17 <sup>th</sup> Oct	18 <sup>th</sup> Oct	19 <sup>th</sup> Oct	20 <sup>th</sup> Oct	21 <sup>st</sup> Oct	22 <sup>nd</sup> Oct	23 <sup>rd</sup> Oct
	TOTAL	Monday	Tuesday	Wednesday	Thursday	Friday	Saturday	Sunday	Monday	Tuesday	Wednesday	Thursday	Friday	Saturday	Sunday
Kogi	0	0	0	0	0	0	0	0	0	0	0	0	0	0	0
Kwara	0	0	0	0	0	0	0	0	0	0	0	0	0	0	0
Lagos	0	0	0	0	0	0	0	0	0	0	0	0	0	0	0
Nasarawa	0	0	0	0	0	0	0	0	0	0	0	0	0	0	0
Niger	0	0	0	0	0	0	0	0	0	0	0	0	0	0	0
Ogun	0	0	0	0	0	0	0	0	0	0	0	0	0	0	0
Ondo	0	0	0	0	0	0	0	0	0	0	0	0	0	0	0
Osun	0	0	0	0	0	0	0	0	0	0	0	0	0	0	0
Oyo	0	0	0	0	0	0	0	0	0	0	0	0	0	0	0
Plateau	0	0	0	0	0	0	0	0	0	0	0	0	0	0	0
Rivers	0	0	0	0	0	0	0	0	0	0	0	0	0	0	0
Sokoto	0	0	0	0	0	0	0	0	0	0	0	0	0	0	0
Taraba	0	0	0	0	0	0	0	0	0	0	0	0	0	0	0
Yobe	0	0	0	0	0	0	0	0	0	0	0	0	0	0	0
Zamfara	0	0	0	0	0	0	0	0	0	0	0	0	0	0	0
Total	0	0	0	0	0	0	0	0	0	0	0	0	0	0	0

## DAILY EPICURVE



**Figure 5:** Daily epidemic curve of reported confirmed cases as of 23<sup>rd</sup> October 2022

WEEKLY EPICURVE

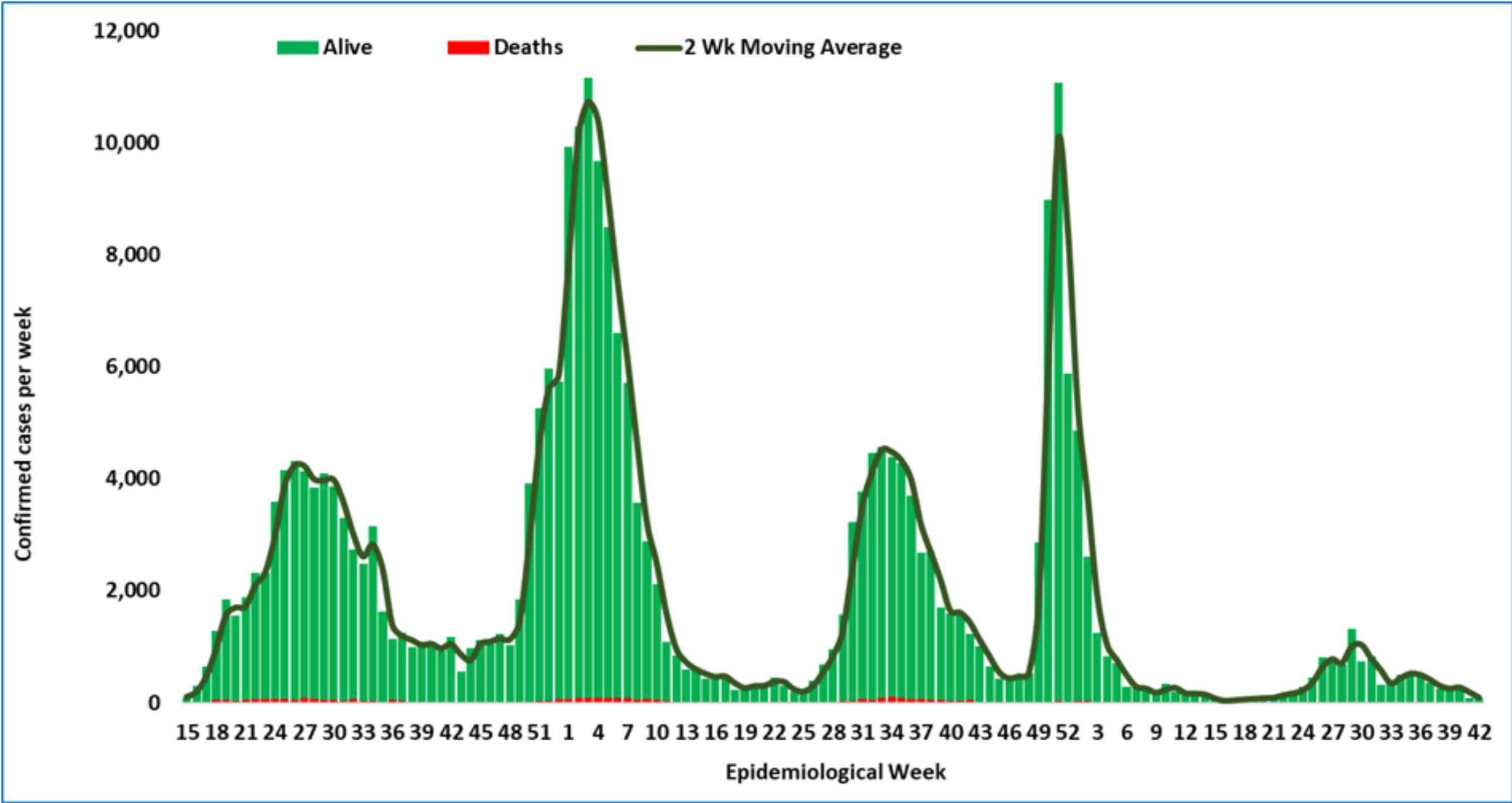
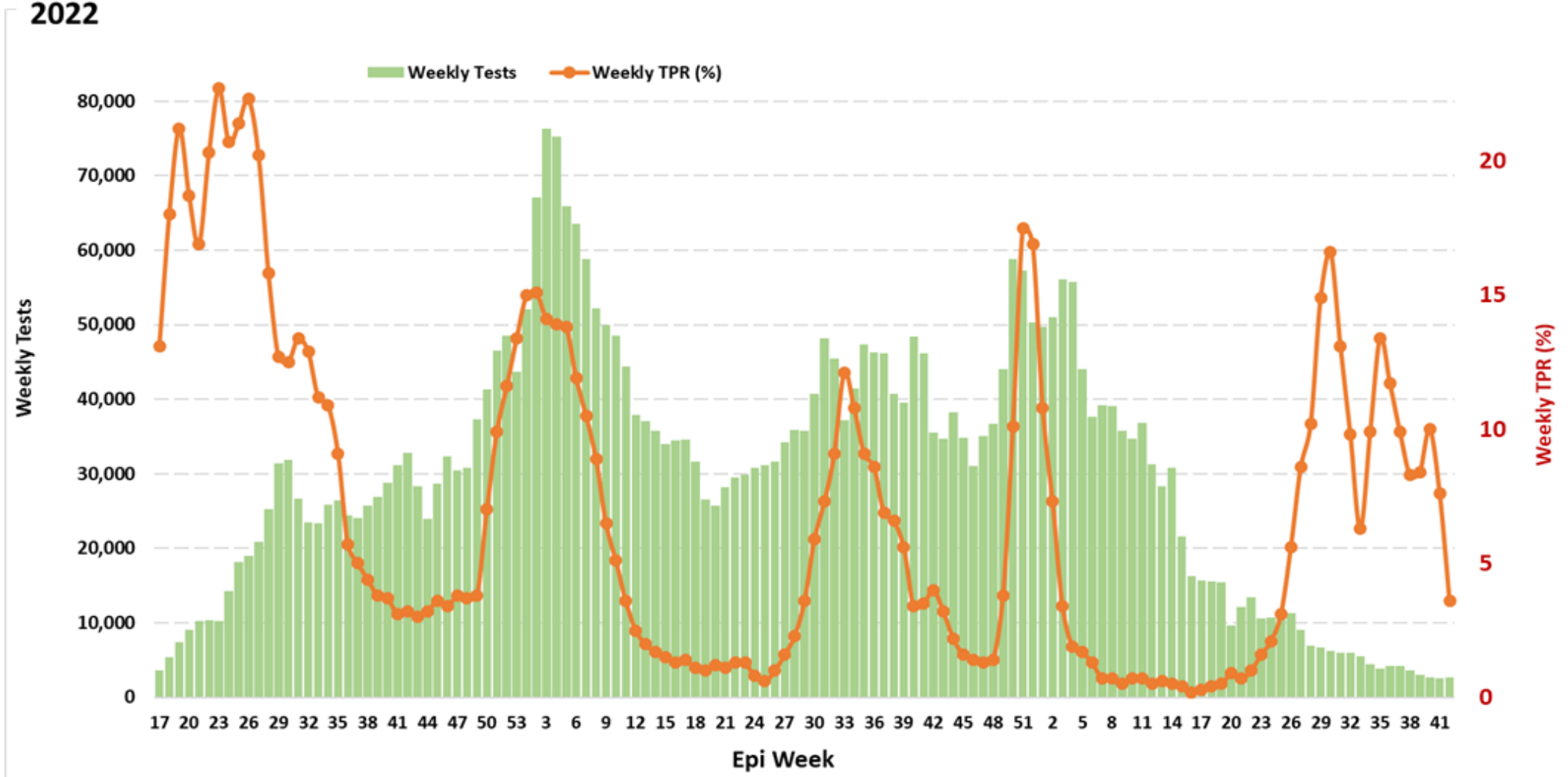


Figure 6: Weekly epidemic curve of confirmed cases (WK15, 2020 – WK 42, 2022) as reported per week

## WEEKLY EPICURVE WITH TESTS AND TEST POSITIVITY RATIO (TPR)

Trends in COVID-19 Weekly Tests and Weekly TPR (%) (2 wk moving avg) from week 17, 2020 to week 42, 2022

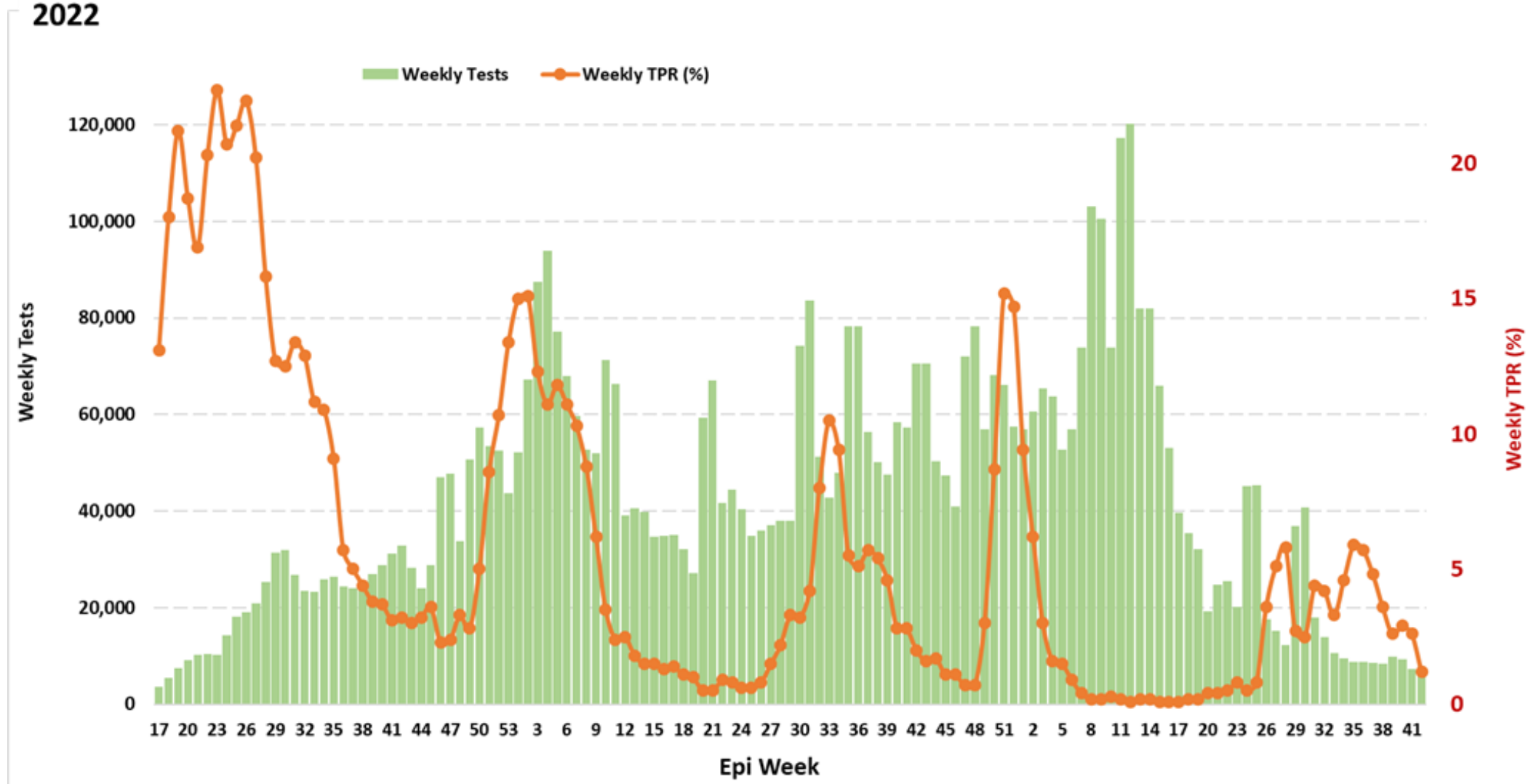


**Figure 7:** Trends in Weekly TPR (%) (2wks Moving average) (WK 17, 2020 – WK 42, 2022). This is based on PCR results ONLY



## WEEKLY EPICURVE WITH TESTS AND TEST POSITIVITY RATIO (TPR)

Trends in COVID-19 Weekly Tests and Weekly TPR (%) (2 wk moving avg) from week 17, 2020 to week 42, 2022



**Figure 8:** Trends in Weekly TPR (%) (2wks Moving average) (WK 17, 2020 – WK 42, 2022). This is based on PCR and RDT results

SELECTED CHARTS: FATALITY TRENDS CASE FATALITY RATIO (CFR)

Trends in COVID-19 Weekly Cases and Weekly CFR (%) (2 wk moving avg) from week 17, 2020 to week 42, 2022

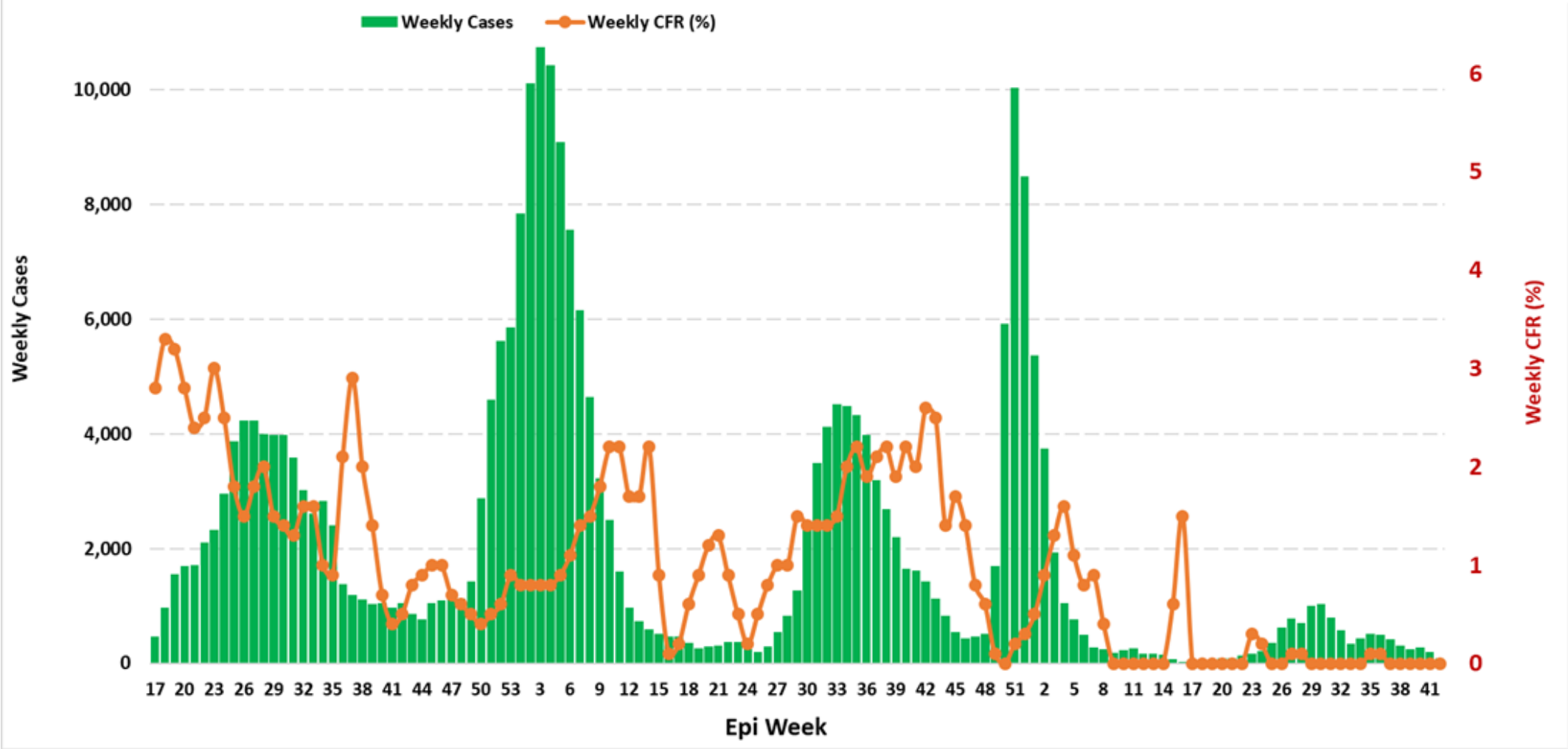


Figure 9: Trends in weekly case fatality ratio (2wks Moving average) (WK 17, 2020 – WK 42, 2022)

AGE-GENDER BREAKDOWN

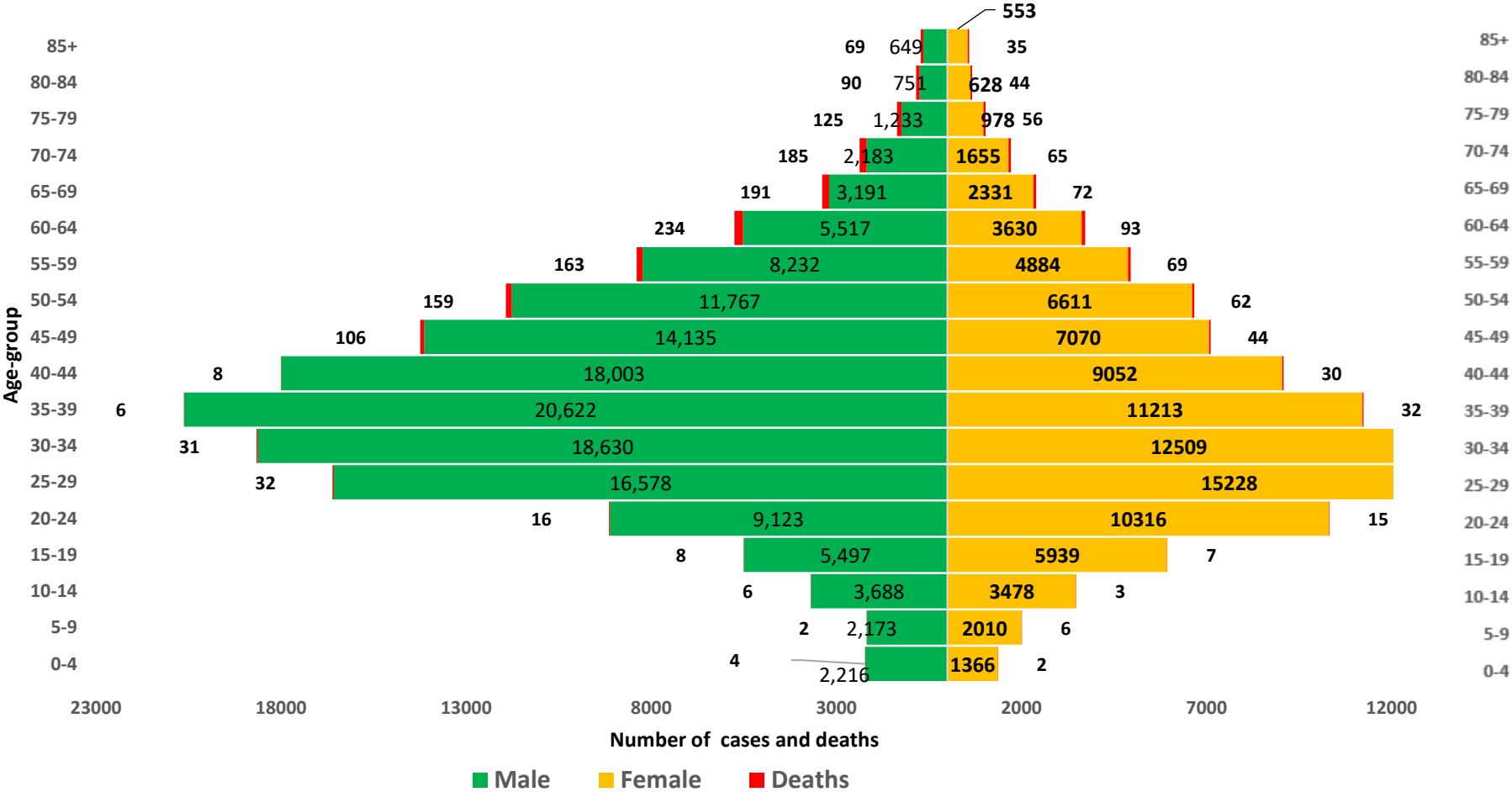


Figure 10: Age and gender distribution of cases and deaths (WK 10, 2020 – WK 42, 2022)

## RESPONSE

On 28<sup>th</sup> February 2020, a multi-sectoral Emergency Operations Centre EOC was activated at Level 3 which is the highest emergency level in Nigeria. This is led by the NCDC in close coordination with the State Public Health Emergency Operations Centres and through the deployment of **62** Rapid Response Teams to states. The EOC presently operates at response level 2 and current response activities include:

### COORDINATION

- **Ongoing review of COVID-19 restrictions and travel protocol**
- **Held engagement meeting with state teams on the ongoing response, Sitrep reporting and Ag-RDT data harmonization, challenges, and way forward.**
- **Conducted next phase of health care workers training on the safe use of approved Ag-based RDTs for COVID-19 diagnosis in Nasarawa State**
- **Ongoing preparation for enhanced risk communication and surge testing activities at the points of entry and communities as yuletide approaches.**
- **Integration of COVID-19 response activities into routine public health interventions such as surveillance, risk communication, testing etc.**
- Continued engagement with states on weekly sitrep reporting.
- Continue to monitor global trends on COVID-19.
- Continued roll out of antigen based rapid diagnostic test kits in collaboration with partners
- Continued tracking and collation of data from states for strategic coordination

### RESEARCH

- Finalised report for the recently completed “Vaccine Hesitancy Study among Health Care Workers”. To commence manuscript writing.
- Published COVID-19 Vaccine Effectiveness studies in Nigeria

### CASE MANAGEMENT – Led by Department of Hospital Services, Federal Ministry of Health

- **Ongoing ISS and data collection on functionality of isolation centres across Nigeria**
- Concluded review of the national guideline on case management for COVID-19
  - Addition of Paxlovid and inclusion of pharmacovigilance
  - Inclusion of clinical reporting for more evidence-based decision making
  - Treatment consideration for lactating mothers etc.
  - Ongoing finalisation of the guideline

### EPIDEMIOLOGY/SURVEILLANCE AND POINT OF ENTRY

- **Conducted training of health care workers in Ogun state on the safe use of approved Ag-based RDTs for COVID-19 diagnosis**
- Ongoing technical evaluation of synchronization issues on SORMAS mobile application in 18 states
- Continue to follow up with states for reports, initial samples, contact tracing and challenges.
- Ongoing enhanced surveillance at points of entry

### INFECTION PREVENTION AND CONTROL (IPC)

- Ongoing monitoring and supervision of healthcare activities across health facilities
- Reviewed IPC workplan in health facilities in Kebbi State
- Ongoing routine monitoring and supervision of patient care activities in health facilities
- Ongoing integration of COVID-19 packages into other disease specific trainings and community sensitization

## LABORATORY

- Ongoing planning to kickstart surge testing in selected health facilities
- Ongoing engagement with testing laboratories with poor testing and / reporting
- Conducted monitoring and supportive supervision visits to Nasarawa state on Third Wave COVID-19 Project supported by UNITAID
- Ongoing addition of laboratories to the network (optimization/activation) on a case-by-case basis
- Ongoing COVID-19 laboratory quality performance audit for existing labs in the network. Fifty-one (51) of the 154 laboratories in the network have been audited.
- Ongoing COVID-19 Ag-RDTs deployment/decentralization
- Ongoing sequencing of qualified positive samples among travellers to Nigeria and positive cases detected in-country. *Omicron variant remains the dominant circulating strain of SARS-CoV-2 in Nigeria*

## LOGISTICS

- Distributed COVID-19 RDT kits to Abia, Benin, Ekiti, Enugu, FCT, Gombe, Imo, Kaduna, Katsina, Nasarawa, Ogun, Ondo, Osun, Oyo and Plateau states Ministry of Health (SMoH) respectively
- Supported National Youth Service Corps (NYSC) Batch C Stream I & II Exercise with sample collection consumables and RDT kits for increase COVID-19 testing
- Completed Zonal Training of Trainers (TOT) on Medical Counter Measures (MCM) Supply Chain Management
- Conducted routine stock inventory & control management
- Ongoing quarterly commodity monitoring and stock verification exercise to reconcile data across states, check available stock balance and utilisation records
- Ongoing pre-positioning of PPE and commodities at the sub-national level for labs, treatment centres, sample collection centres and other relevant facilities as preparedness for surge in cases

## RISK COMMUNICATION

- Conducted media interviews and responded to national and international media queries on COVID-19, monkeypox, Cholera, and Ebola Virus Disease
- Reviewed COVID-19 posters developed by Water Aid to be used for campaign on COVID-19 hygiene behavioral change approach in Enugu and Bauchi States
- Ongoing discussion with WHO on the distribution of all available printed copies of Social and Behavior Change (SBC) materials to states
- Continue to integrate COVID-19 messages to activities in the states.
- Community listening and monitoring for COVID-19 updates and misinformation.

- **Offsite support to state health promotion officers.**
- Held infodemic management meeting with partners to address misinformation and disinformation challenges
- Completed stepdown Infodemic management training for subnational stakeholders in 12 states
- Develop IEC materials and messages for RDT testing
- Developed and disseminated health advisory on COVID-19 to the public
- Continue training states on demand creation for RDT testing
- Continue support to NPHCDA in the COVID-19 vaccination campaign

## NEXT STEPS

- **Collaborating with NLC to train 50 peer influencers at the LGA level in 12 states on COVID-19 prevention and control**
- **Conduct risk communication capacity assessment in 12 states supported by Global fund**
- **Complete ongoing COVID-19-related studies**
- **Scale up infodemic training to the remaining states**
- **Continue to engage states on scaling up samples collection and weekly Sitrep reporting**
- **Continue the process of Ag-RDT data harmonization**
- **Continue integration of COVID-19 into routine health services**
- **Continue to monitor global trends on COVID-19**
- Training and final review of recently reviewed case management tool
- Training of trainers on Home-Based and Isolation Care in six geopolitical zones
- Finalize annual supply planning document for 2022/2023 Medical Counter Measure assets
- Continue training of trainers on safe and appropriate use of Ag-RDTs for US-CDC implementing partners (APIN, IHVN)
- Commence the Community of Practice for Case Managers
- Commence Data Management Capacity building for Case Managers
- Intensify genomic surveillance activities across the country

## PREPAREDNESS

Since the confirmation of the first case on 27<sup>th</sup> February 2020, the NCDC has released advisories, guidelines, and statements to help Nigerians and affected groups to respond to the pandemic:

- NCDC published [COVID-19 Vaccine Effectiveness studies in Nigeria](#)
- To control spread of COVID-19 in Nigeria, NCDC has recently issued [“COVID-19 Public Health Advisory Amidst Increasing Case Numbers”](#)
- Presidential Steering Committee on COVID-19 updated the Implementation Guidelines for Easing COVID-19 Restrictions: [http://covid19.ncdc.gov.ng/media/files/F5\\_-\\_IMPLEMENTATION\\_GUIDELINES\\_Ako.pdf](http://covid19.ncdc.gov.ng/media/files/F5_-_IMPLEMENTATION_GUIDELINES_Ako.pdf)
- NCDC revised and updated the [Nigeria International Travel Portal \(NITP\)](#)



- Presidential Steering Committee on COVID-19 updated the international travel protocol: [http://covid19.ncdc.gov.ng/media/files/Revised\\_Travel\\_protocol\\_revised\\_2nd\\_April\\_2022.pdf](http://covid19.ncdc.gov.ng/media/files/Revised_Travel_protocol_revised_2nd_April_2022.pdf)
- Celebrate Responsibly Campaign: [NCDC Intensifies COVID-19 Awareness ahead of the Yuletide](#)
- NCDC issued a press release on the *detection of the first confirmed cases of omicron variant of SARS-CoV-2 in Nigeria*
- NCDC revised and updated the [Nigeria International Travel Portal \(NITP\)](#)
- Presidential Steering Committee on COVID-19 released a press statement on [Revised International Travel Protocol into Nigeria](#)
- NCDC published [COVID-19 safety guidelines for Conferences and Events in Nigeria](#)
- NCDC issued a press release on the *detection of the first confirmed case of delta variant of SARS-CoV-2 in Nigeria*
- Presidential Steering Committee on COVID-19 reviewed and published [Travel advisory for passengers arriving Nigeria from Brazil, India and Turkey to include South Africa](#)
- Presidential Steering Committee on COVID-19 published [Travel advisory for passengers arriving Nigeria from Brazil, India and Turkey](#)
- Presidential Steering Committee on COVID-19 published [Implementation guidelines for phased restriction of movement](#)
- NCDC published [One year of COVID-19 response in Nigeria](#)
- NCDC and NIMR publish [findings of COVID-19 household seroprevalence surveys in four states of Nigeria](#)
- NCDC published a [Statement on variants of SARS-CoV-2 in Nigeria](#)
- The Federal Ministry of Education (FME) and partners, PTF and NCDC have developed: [Guidance for integrated safe school re-opening 26<sup>th</sup> January 2021](#)
- COVID-19 Health Protection Regulation signed by President Muhammadu Buhari on 26<sup>th</sup> January 2021: [Coronavirus Disease \(COVID-19\) Health Protection Regulations 2021](#)
- NCDC published an updated [community case definitions for coronavirus disease 2019](#)
- The Federal Ministry of Health and NCDC published [COVID-19 Patient's handbook for home-based care in Nigeria](#)
- NCDC published an updated [case definitions for coronavirus disease](#)
- NCDC published [Guidance for the use of approved COVID-19 antigen-based rapid diagnostic tests in Nigeria](#)
- Update of [travel protocols](#) for all travellers into Nigeria from [UK and South Africa](#)
- NCDC recently launched the [Celebrate Responsibly](#) campaign in response to the increase in cases of coronavirus disease (COVID-19) and poor adherence to public health and social measures across the country: [Celebrate Responsibly and Save Lives – New Awareness Campaign for the Yuletide Season](#)
- Ahead of the Christmas and end of year festivity, NCDC published the [End-of-Year Travel Advisory on COVID-19](#)
- NCDC recently launched the [COVID-19 blog](#) for telling the stories of Nigeria's response to the COVID-19 pandemic.
- NCDC published guidelines on 2020 National Youth Service Corps (NYSC) Orientation Camp activities in conjunction with PTF and NYSC: [Guidelines on 2020 National Youth Service Corps \(NYSC\) Orientation Camp activities](#)
- NCDC published guidance on the use of antigen RDTs: [Guidance on the use of Antigen Rapid Diagnostic Kits for diagnosis of SARS-CoV-2 infection in Nigeria](#)
- NCDC published guidance on safe school re-opening: [Public Health guidance for Safe School re-opening in Nigeria](#)



- NCDC published second interim guidance – Infection Prevention and Control: [Recommendations during health care provision for suspected and confirmed cases of COVID-19](#)
- NCDC recently published the first edition of a quick reference guide on setting up sample collection centre - [A step by step guide on setting up a sample collection centre](#)
- NCDC has launched an online course on [Infection, Prevention and Control \(IPC\) for COVID-19](#) NCDC eLearning platform
- Ahead of forthcoming elections in the country, NCDC has issued [Guidelines for Conducting Elections During the COVID-19 Outbreak in Nigeria](#).
- To protect our elders, and those with pre-existing medical conditions, NCDC has issued an [Advisory for Vulnerable Groups](#).
- NCDC has released [guidelines on the re-opening of places for worship](#).
- NCDC has released [Strategies to Improve Surveillance for COVID-19 Guidance for States](#)
- The Nigeria Police Force has released COVID-19 operational guidelines for the [Police and other Law Enforcement Agencies](#) in Nigeria
- Guidelines have been issued for the [safe transportation of remains of persons suspected or confirmed to have died of COVID-19](#)
- Information on diagnostics of the COVID-19 virus can be found in our [detailed FAQ document](#).
- To increase our testing capacity, NCDC has issued guidelines for the [integration of private labs](#).
- Guidelines for [businesses and employers](#) have been updated.
- NCDC has updated its [case definition](#) , [community case definition](#) and [case management guide](#).
- NCDC releases periodic [public health advisories](#) to Nigerians on the COVID-19 disease.
- To adhere to post-lockdown measures, NCDC has released an [advisory on the use of face masks](#), as well as information on the [Use of Cloth face masks](#) and [how to make your cloth face masks](#).
- NCDC has released guidelines for the [management of pregnant women and nursing mothers](#) during the pandemic.
- To address burials of loved ones who die from COVID-19, guidelines have been issued to advise on the [safe burials](#)
- For health centres managing cases, the following documents have been released- a guideline for the [Rational Use of Personal Protective Equipment in the care of COVID-19 cases](#).
- As part of plans to increase the testing capacity of the country, the NCDC published a [National Strategy to Scale Up Access to Coronavirus Disease Testing in Nigeria](#) document.
- The Presidential Task Force has published policies and announcements on COVID-19 [available on the website of the Presidency](#) – including presidential addresses, task force updates and information on livelihood and economic support.

## INFORMATION RESOURCES

- Nigeria Centre for Disease Control: [www.covid19.ncdc.gov.ng](http://www.covid19.ncdc.gov.ng) | [www.ncdc.gov.ng](http://www.ncdc.gov.ng)
- Nigerian Presidency Website on COVID-19: [www.statehouse.gov.ng/COVID19](http://www.statehouse.gov.ng/COVID19)
- WHO Coronavirus Disease (COVID-19) Dashboard (**source for global updates**) <https://covid19.who.int/>