

# COVID-19 SITUATION REPORT

## SITUATION REPORT 119

Friday, 26<sup>th</sup> June 2020



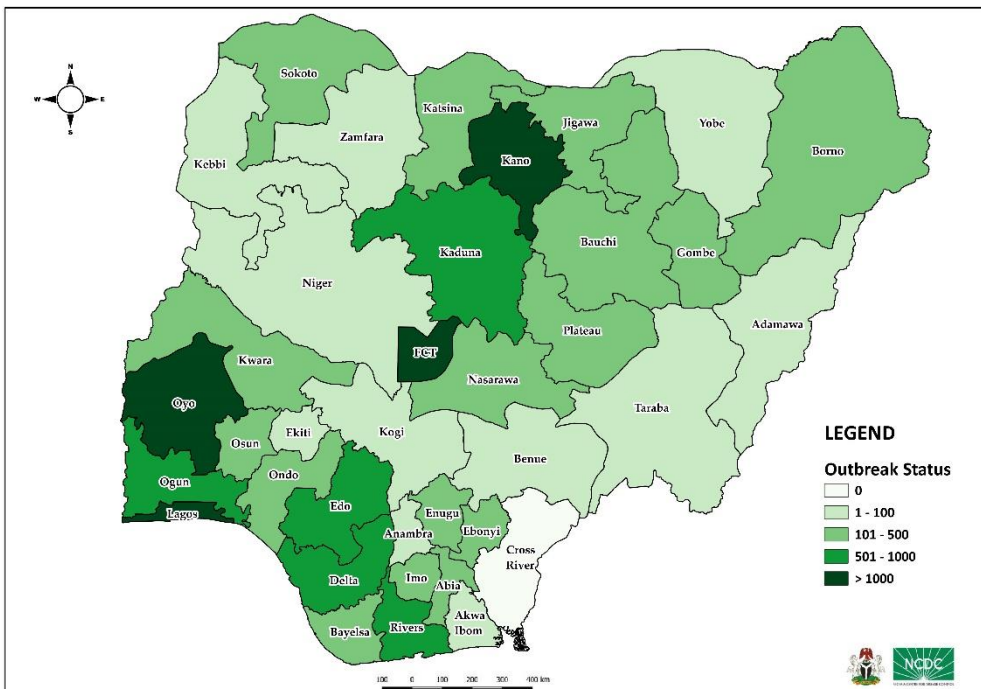
DATA AS REPORTED AND ACCURATE BY NCDC AS AT MIDNIGHT 26<sup>th</sup> JUNE 2020

### HIGHLIGHTS

- Six hundred and eighty-four (**684**) confirmed cases were reported in the last 24 hours from **19** states - Lagos (259), Oyo (76), Katsina (69), Delta (66), Rivers (46), Ogun (23), Edo (22), Osun (22), Ebonyi (21), FCT (20), Kaduna (16), Ondo (10), Imo (9), Abia (9), Gombe (5), Plateau (4), Bauchi (4), Ekiti (2) and Anambra (1)
- No new state recorded a confirmed COVID-19 case in the last 24 hours. The total number of states including FCT that have reported at least one confirmed case in Nigeria is still **36** (35 states + FCT)
- Four hundred and thirty-one (**431**) cases were discharged in the last 24 hours in **13** states – Oyo (169), Rivers (63), Bauchi (46), Ogun (45), Ebonyi (25), Kano (25), Gombe (12), Delta (11), Edo (10), Imo (10), Kaduna (8), FCT (4) and Ondo (3)
- Five deaths were recorded in the last 24 hours in **four** states – Rivers (2), Oyo (1), Edo (1), and Sokoto (1)

### STATE OF THE NATION

Figure 1: Map of Nigeria showing 35 states and FCT affected by COVID-19



### SITUATION UPDATES

Total (New in the last 24 hours)

SAMPLES TESTED

**127,158 (2,068)**

CONFIRMED CASES

**23,298 (684)**

AFFECTED STATES INCLUDING FCT

**36 (0)**

DISCHARGED CASES

**8,253 (431)**

CONFIRMED FATALITIES

**554 (5) – 2.4% CFR**

DEMOGRAPHICS

MALE – 15,504 (**67%**)

FEMALE – 7,794 (**33%**)

MOST AFFECTED AGE GROUP

**31 - 40 (24%)**

PERSONS OF INTEREST

**10,498 (Total)**

**10,458 (99.6% - Exceeded Follow Up)**

PROVENANCE

TRAVEL HISTORY – **407 (2%)**

CONTACTS – **5,511 (24%)**

UNKNOWN EXPOSURE – **17,380 (74%)**

GLOBAL UPDATES

TOTAL NUMBER OF CASES

**9,473,214 (484,249 deaths)**

COUNTRIES & TERRITORIES AFFECTED\*

**213**

\*Excluding the 2 International Conveyances

## GENERAL FACT SHEET – DATA AS AT 26<sup>th</sup> JUNE 2020

Table 1: States with reported laboratory-confirmed COVID-19 cases, recoveries, deaths and days since last reported case

STATES	CONFIRMED CASES		DISCHARGED CASES		DEATHS		TOTAL ACTIVE CASES	DAYS SINCE LAST REPORTED CASE
	CUMULATIVE	NEW	CUMULATIVE	NEW	CUMULATIVE	NEW		
Lagos	9,741	259	1,475	0	126	0	8,140	0
FCT	1,676	20	518	4	32	0	1,126	0
Oyo	1,264	76	506	169	10	1	748	0
Kano	1,191	0	818	25	51	0	322	2
Rivers	982	46	536	63	38	2	408	0
Edo	873	22	267	10	33	1	573	0
Delta	781	66	170	11	22	0	589	0
Ogun	756	23	498	45	17	0	241	0
Kaduna	684	16	320	8	10	0	354	0
Katsina	528	69	267	0	22	0	239	0
Bauchi	497	4	424	46	12	0	61	0
Gombe	487	5	329	12	16	0	142	0
Borno	477	0	387	0	32	0	58	3
Jigawa	317	0	191	0	6	0	120	13
Plateau	298	4	156	0	8	0	134	0
Abia	297	9	173	0	3	0	121	0
Ebonyi	285	21	247	25	1	0	37	0
Imo	278	9	33	10	3	0	242	0
Kwara	217	0	128	0	6	0	83	2
Ondo	216	10	70	3	19	0	127	0
Enugu	202	0	37	0	5	0	160	1
Nasarawa	198	0	112	0	8	0	78	1
Bayelsa	184	0	41	0	12	0	131	2
Sokoto	140	0	118	0	15	1	7	2
Osun	106	22	47	0	5	0	54	0
Niger	84	0	37	0	3	0	44	1
Akwa Ibom	83	0	43	0	2	0	38	2
Zamfara	76	0	71	0	5	0	0	39
Adamawa	73	0	37	0	6	0	30	1
Anambra	71	1	57	0	9	0	5	0
Kebbi	71	0	42	0	6	0	23	1
Yobe	56	0	45	0	8	0	3	8
Benue	47	0	15	0	1	0	31	3
Ekiti	40	2	28	0	2	0	10	0
Taraba	19	0	10	0	0	0	9	1
Kogi	3	0	0	0	0	0	3	23
<b>TOTAL</b>	<b>23,298</b>	<b>684</b>	<b>8,253</b>	<b>431</b>	<b>554</b>	<b>5</b>	<b>14,491</b>	

States including FCT are arranged in descending order by number of total confirmed cases

## SELECTED CHARTS

Figure 2: Daily Epidemic Curve of Confirmed Cases (WK9 – WK26)

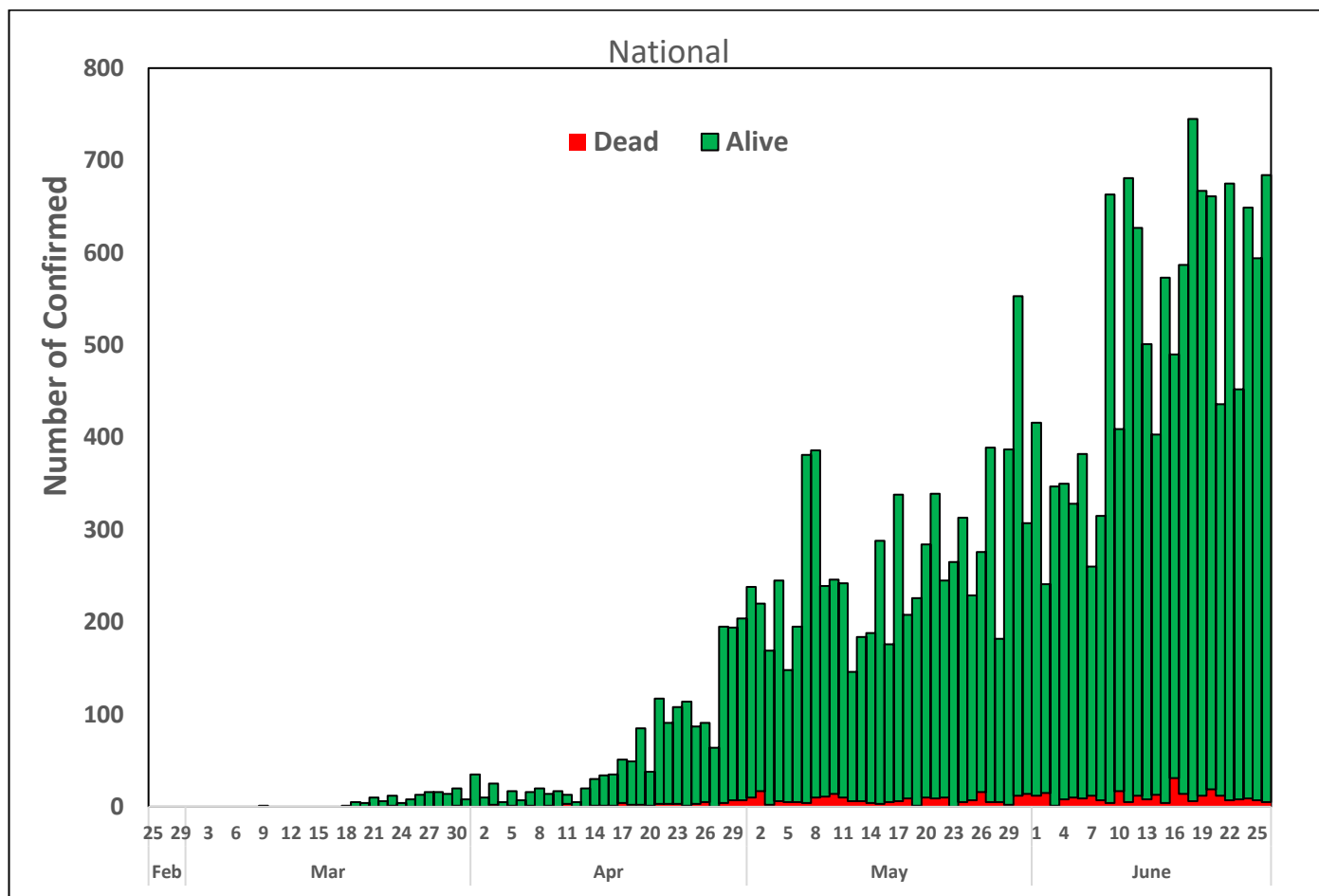
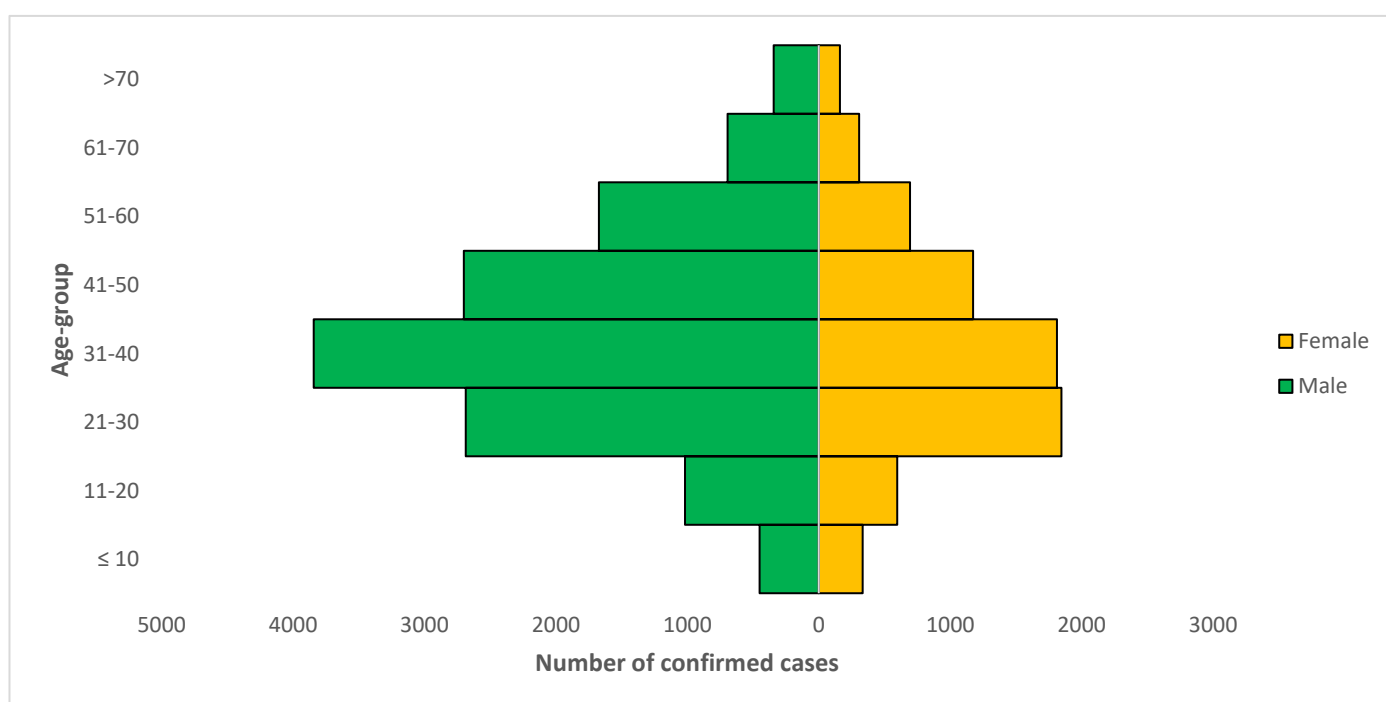


Figure 3: Age-Sex Distribution of Confirmed Cases (WK9 – WK26)



## PREPAREDNESS

Since the confirmation of the first case on 27<sup>th</sup> February 2020, the NCDC has released advisories and statements to help Nigerians and affected groups in particular to respond to the pandemic

- NCDC has released [guidelines on the re-opening of places for worship](#).
- The Nigeria Police Force has released COVID-19 operational guidelines for the [Police and other Law Enforcement Agencies](#) in Nigeria
- NCDC and the Department of Hospital Services (Federal Ministry of Health) have updated the [case management guidelines](#) (version 3) with reviewed changes such as the discharge criteria and medication being used for the treatment of cases
- Guidelines have been issued for the [safe transportation of remains of persons suspected or confirmed to have died of COVID-19](#)
- Information on diagnostics of the COVID-19 virus can be found in our [detailed FAQ document](#).
- To increase our testing capacity, NCDC has issued guidelines for the [integration of private labs](#).
- Guidelines for [businesses and employers](#) have been updated.
- NCDC has updated its [case definition](#) , [community case definition](#) and [case management guide](#).
- NCDC releases periodic [public health advisories](#) to Nigerians on the COVID-19 disease.
- To adhere to post-lockdown measures, NCDC has released an [advisory on the use of face masks](#), as well as information on the [Use of Cloth face masks](#) and [how to make your cloth face masks](#).
- NCDC has released guidelines for the [management of pregnant women and nursing mothers](#) during the pandemic.
- To address burials of loved ones who die from COVID-19, guidelines have been issued to advise on the [management of dead bodies](#).
- For health centres managing cases, the following documents have been released- a guideline for the [Rational Use of Personal Protective Equipment in the care of COVID-19 cases](#).
- As part of plans to increase the testing capacity of the country, the NCDC published a [National Strategy to Scale Up Access to Coronavirus Disease Testing in Nigeria](#) document.
- The Presidential Task Force has published policies and announcements on COVID-19 [available on the website of the Presidency](#) – including presidential addresses, task force updates and information on livelihood and economic support.

## RESPONSE

On 28<sup>th</sup> February 2020, a multi-sectoral Emergency Operations Centre (EOC) was activated at Level 3 – the highest emergency level in Nigeria –led by NCDC in close coordination with the State Public Health EOCs (PHEOC).

- **High level virtual strategic meeting with State Epidemiologists and Incident Managers to discuss key issues affecting response across states**
- **Engagement with Partners and Presidential Task Force (PTF) to finalise Local Government Area (LGA) hotspot strategies**
- **Engagement with states to Investigate cases of healthcare worker infection and providing support in closing identified gaps**
- **Updated the National Strategic Stockpile Inventory (NSSI) and generated logistics stock status report**
- **Developed and shared a template for capturing partners support and resource gaps with stakeholders and partners**
- **Engaged development partners on effective use of basket funds for supporting community**
- Ongoing review and finalisation of contact tracing guidelines
- Ongoing development of 23 critical indicators for data quality performance monitoring
- Ongoing comprehensive training of 40 Healthcare Workers (HCWs) from public and private sector for two weeks in Kwara State
- Deployment of reagents and other consumables for activating COBAS system throughput testing at the Central Public Health Laboratory (CPHL)
- Participated in a resource mobilisation meeting with development partners
- All education materials can be found via [www.covid19.ncdc.gov.ng](http://www.covid19.ncdc.gov.ng)